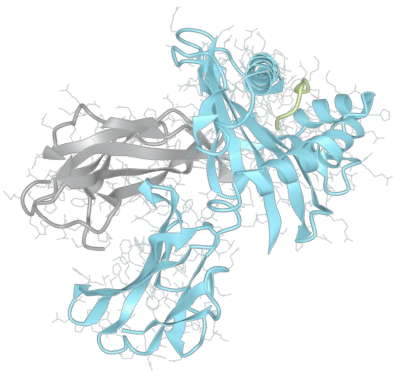


# Product datasheet

## sHLA-B\*56:01

B\*5601, B5601, B\*56, B56, B56



<b>Serological Name</b>	B56
<b>Peptide Load</b>	Endogenous
<b>Modification</b>	Unmodified
<b>Conjugation</b>	Unconjugated
<b>SKU</b>	B5601

### Product Description

<b>Allele Name</b>	B*56:01 B2m
<b>HLA Class</b>	HLA Class I
<b>HLA Gene Locus</b>	HLA-B
<b>Alternative Allele Name A Chain</b>	B*5601, B5601, B*56, B56, B56
<b>Alternative Allele Name B Chain</b>	-
<b>Description</b>	Recombinant, truncated Class I soluble Human Leukocyte Antigen (sHLA), naturally folded and glycosylated, loaded with endogenous peptides.
<b>Serological Name</b>	B56
<b>Serological Split</b>	B22
<b>Bw4/Bw6 Assignment</b>	Bw6
<b>Bw4/Bw6 Sequence</b>	SLRNLRG
<b>Allele Frequency [World Population]</b>	
<b>A chain</b>	1.9%
<b>B chain</b>	-

### Associated products

[B5601bio](#)  
[B5601pe](#)

## Product Specification

<b>Product name</b>	HLA-B*56:01
<b>HLA Species</b>	Human
<b>Host Cell Line Species</b>	Human
<b>Clone Designation</b>	C2H3
<b>Tail Specification</b>	VLDL
<b>Peptide Load</b>	Endogenous
<b>Modification</b>	Unmodified
<b>Conjugation</b>	Unconjugated
<b>Complexity</b>	Monomer
<b>Protein Format</b>	Recombinant, truncated, soluble, non-modified, non-labeled, endogenously loaded
<b>Storage Temperature</b>	4 °C (This product should be stored undiluted)
<b>Form</b>	Liquid
<b>Concentration</b>	1000.0 µg/ml
<b>Formulation</b>	PBS/0.02% Sodium Azide
<b>pH</b>	7.4
<b>Purification Method</b>	Affinity Chromatography
<b>Grade</b>	Research Use Only [RUO]
<b>Authentication Verification</b>	Sequence Based Typing

## Protein Sequences

<b>Alpha Chain Sequence</b>	GSHSMRYFYT AMSRPGRGEP RFIAVGYVDD TQFVRFSDSA ASPREEPRAP WIEQEGPEYW DRNTQIYKAQ AQTDRSLRN LRGYYNQSEA GSHTWQTMYG CDLGPDGRLR RGHNQLAYDG KDYIALNEDL SSWTAADTAA QITQRKWEAA RVAEQLRAYL EGLCWEVLR R YLENGKETLQ RADPPKTHVT HHPISDHEAT LRCWALGFYP AEITLTWQRD GEDQTQDTEL VETRPAGDR T FQKWAAVVVP SGEEQRYTCH VQHEGLPKPL TLRVSVSTDD DLA
<b>Beta Chain Sequence</b>	IQRTPKIQVY SRHPAENGKS NFLNCYVSGF HPSDIEVDLL KNGERIEKVE HSDLSFSKDW SFYLLYYTEF TPTEKDEYAC RVNHVTL SQP KIVKWDRDM

## Related Products

[B5602](#)  
[B5604](#)  
[A0201](#)  
[B0702](#)

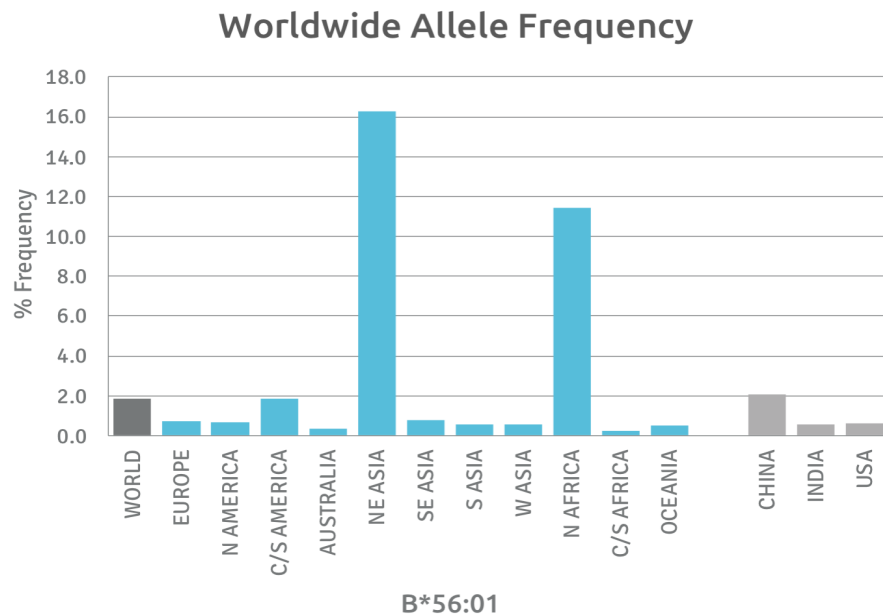
## Applications

HLA Sandwich ELISAs  
HLA Direct ELISAs  
HLA-Sera Antibody Assays  
HLA Controls in ELISA Assays  
HLA Assay Standards  
HLA Blocking Assays  
HLA Neutralizing Assays  
HLA Competition Assays  
HLA Bead Assays  
HLA Immunization Procedures

## Recommended Antibodies

W6/32  
Anti-B2m

## Allele Frequency



Please note:

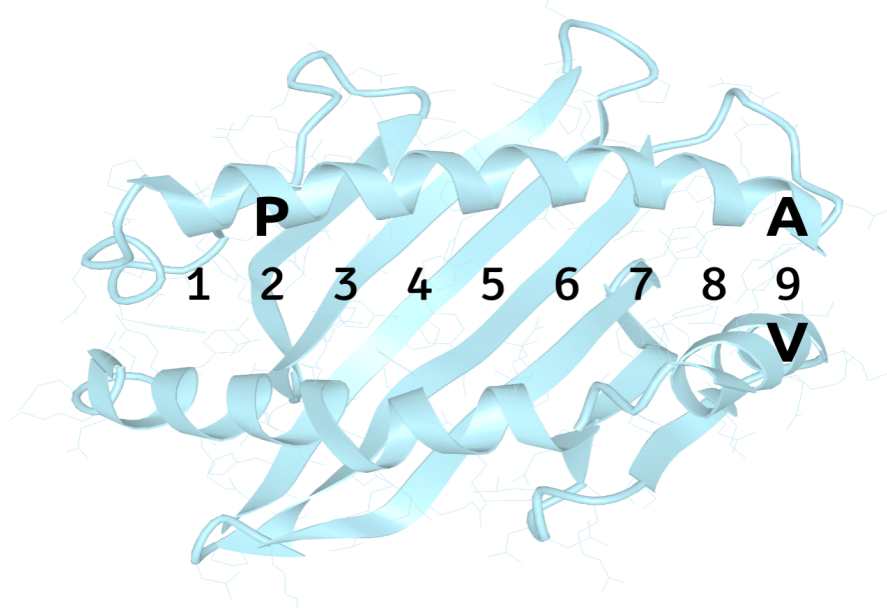
ALL PRODUCTS ARE FOR RESEARCH USE ONLY. NOT FOR COMMERCIAL USE IN DIAGNOSTIC PROCEDURES.  
For more information, please visit our Policies section on our website. For licensing inquiries, please contact

[licensing@hlaprotein.com](mailto:licensing@hlaprotein.com)

 HLA Protein  
PURE PROTEIN, LLC

## Motif

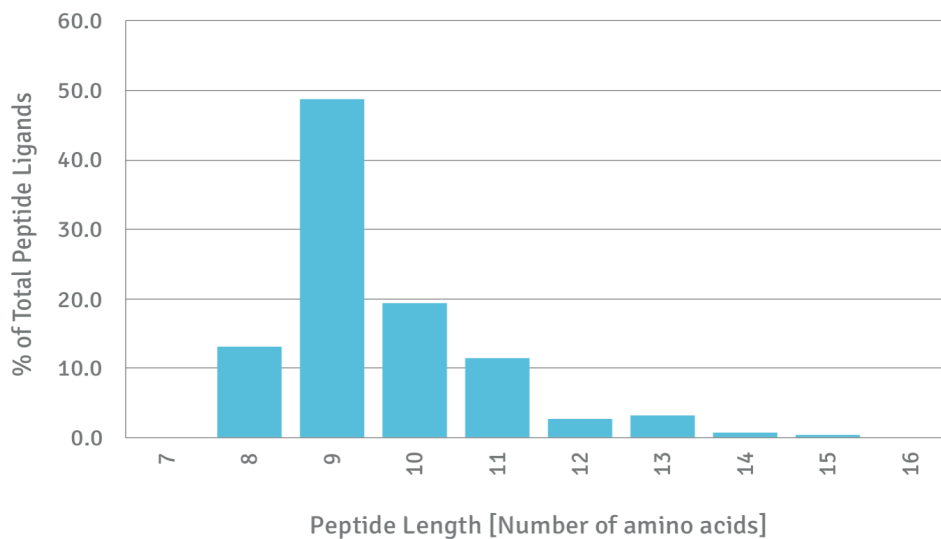
### B\*56:01 BINDING MOTIF



## Length Distribution

### HLA Length Distribution

**B\*56:01**



Please note:

ALL PRODUCTS ARE FOR RESEARCH USE ONLY. NOT FOR COMMERCIAL USE IN DIAGNOSTIC PROCEDURES.

For more information, please visit our Policies section on our website. For licensing inquiries, please contact

[licensing@hlaprotein.com](mailto:licensing@hlaprotein.com)

Eplet Assignments

B\*56:01

Eplet	Polymorphic Residues	Antibody Reactivity
9Y	9Y	
12M	12M	
45EE	45E46E	
62RN	62R63N	
63NI	63N66I	
65QIA	65Q66I69A	Yes
66I	66I	
66IY	66I67Y	
69AA	69A71A	Yes
70IAQ	66I69A70Q	Yes
76ES	76E77S	
76ESN	76E77S80N	Yes
77S	77S	
77SRN	77S79R80N	
80N	80N	Yes
95W	95W	
97T	97T	
99Y	99Y	
103L	103L	
113H	113H	
113HN	113H114N	
116L	116L	
131S	131S	Yes
151ARV	150A151R152V	
152V	152V	
156L	156L	
163L	163L	
163LE	163L166E	
163LW	163L167W	Yes
193PI	193P194I	